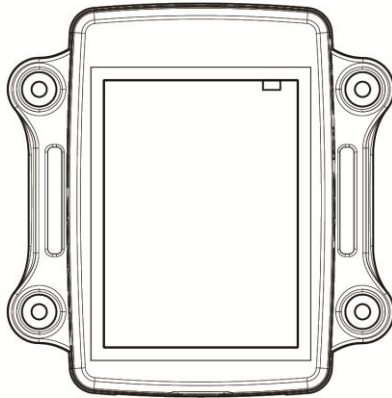


LT-20 Series Development Document



Version: 1.1

GlobalSat WorldCom Corporation

16F., No. 186, Jian 1st Rd., Zhonghe Dist.,

New Taipei City 23553, Taiwan

Tel: 886.2.8226.3799/ Fax: 886.2.8226.3899

lora@globalsat.com.tw

www.globalsat.com.tw

USGlobalSat Incorporated

14740 Yorba Court, Chino, CA 91710

Tel: 888.323.8720 / Fax: 909.597.8532

sales@usglobalsat.com

CONTENT

1. Introduction	2
2. Gateway Setup	3
3. Protocol Summary.....	4
3.1 Report Messages Format.....	4
3.1.1 Tracking Report Format	4
3.2 Command Format	6
3.3 Configuration Parameters	7
4. Communication	10
4.1 Acknowledgement.....	10
4.1.1 Receive Acknowledgement from Gateway.....	11
5. Tracking	12
5.1 Periodic Mode	12
5.2 Motion Mode.....	13

1. Introduction

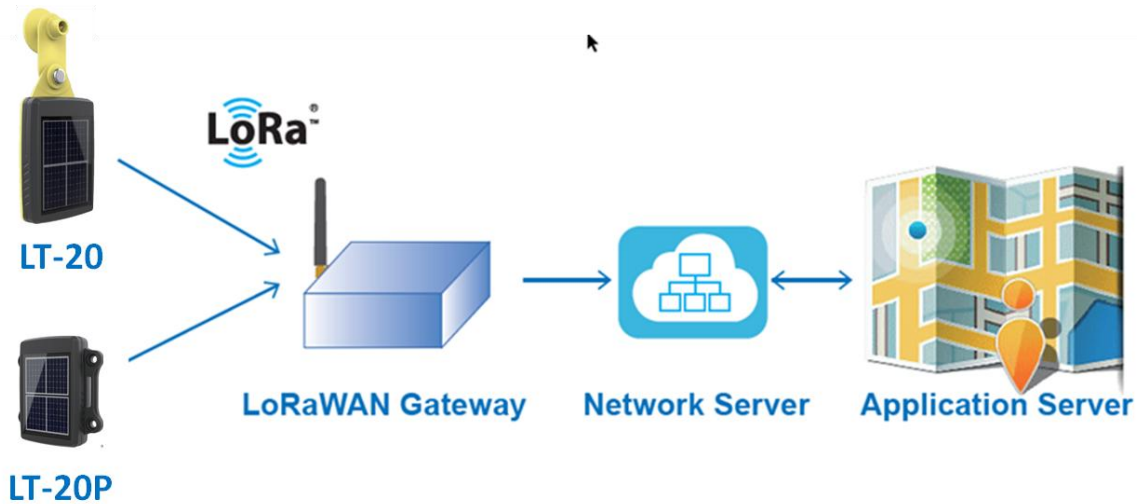
The LT-20 Series is a LoRaWAN compliant solar tracker. The device has a solar panel for charging by sunlight. It could be charged by DC power via charging cradle as well. The high performance solar panel can provide sufficient power for continuous LoRa transmission.

Features:

- High performance solar panel to provide continuous charging for internal battery
- Provide periodic battery status messages to server
- Built- in 3 axis accelerometer for motion detector
- Configurable setting by GlobalSat configuration App via BLE
- Power Low alert
- IPX7 waterproof rating

2. Gateway Setup

LT-20 Series could send data via LoRa[®] technology. Please refer to the following diagram.



Before starting communication LoRaWAN[™] gateway and LT-20 Series LoRa[®] trackers, please refer to [LoRaWAN[™] gateway's user manual](#) to set the LoRa[®] settings by GlobalSat Configuration App.

3. Protocol Summary

3.1 Report Messages Format

3.1.1 Tracking Report Format

Tracking report format of report messages:

Protocol Version	Command ID	Longitude	Latitude	GPS Fix Status & Report Type	Battery Capacity	Preserved
80 1 byte	02 1 bytes	3 bytes	3 bytes	1 byte	1 byte	00 1 byte

Note: longitude (3 bytes) and latitude (3 bytes) belongs to 'Integer', not unsigned integer.

GPS fix status & report type:

GPS Fix Status	Report Type
Bit5~Bit7	Bit0~Bit4

Parameters of Report Message

Parameters	Description
GPS-fix Status	00=not fix, 01=2D fix, 10=3D fix
Report Type	2=Periodic mode report 4=Motion mode static report 5=Motion mode moving report 6=Motion mode static to moving report 7=Motion mode moving to static report 15=Low battery alarm report
Longitude	xxx.xxxxxx unit: degree
Latitude	xx.xxxxxx unit: degree
Battery Capacity	xxx unit: percent capacity

Example1: The period report is 80 02 9E 38 56 00 51 23 42 43 00.

Protocol version: 80

Command ID: 02 => Tracking report

Longitude: 9E3856 => 0x56389E [little – endian] =>

Hex longitude to decimal: 5,650,590

$(5,650,590 * 215) / 10 * 0.000001 = 121,487,685 * 0.000001 = 121.487685^\circ$

Latitude: 005123 => 0x235100 [little – endian] =>

$(2,314,496 * 108) / 10 * 0.000001 = 24,996,556 * 0.000001 = 24.996556^\circ$

GPS-fix Status: 0x42 => 66 / 32 = 2 => 3D Fix

Report Type: 0x42 => 66% 32= 2 => Periodic mode report

Battery Capacity: 0x43 => 67 %

Preserved: 00

Example2: The period report is 80 02 1F 53 FB 00 51 23 45 62 00.

Protocol version: 80

Command ID: 02 => Tracking report

Longitude: 1F53FB => 0xFB531F [little – endian] =>

Hex longitude to decimal: 16,470,815

When the decimal value is greater than '800000', it means this value would be minus. Then, it needs to use

$0xFB531F - 0x01000000 = 0x FFFF FFFF FFFB 531F$

*Hex longitude to decimal:

$(-306,401 * 215) / 10 * 0.000001 = -6,587,621.5 * 0.000001 = -6.5876215^\circ$

Latitude: 005123 => 0x235100 [little – endian] =>

$(2,314,496 * 108) / 10 * 0.000001 = 24,996,556 * 0.000001 = 24.996556^\circ$

GPS-fix Status: 0x45 => 69 / 32 = 2 => 3D Fix

Report Type: 0x45 => 69% 32= 5 => Motion mode moving report

Battery Capacity: 0x62 => 98 %

Preserved: 00

3.2 Command Format

Set device

Protocol Version	Command ID	Data Length	Parameters	Carriage Return and Line Feed (CR and LF)
0C (1 Byte)	0800 (2 Bytes)	Include the length of command code word (parameter) and CR+LF (1 Byte)	L2(parameters) Refer to 3.3 Configuration Parameters	0D0A (2 Bytes)
Example: Set device to disable GPS L2(C1=60)				
0C	0800	0A	4c322843313d363029	0D0A

3.3 Configuration Parameters

Most behaviors of LT-20 could be changed by Configuration Parameters. You could change the setting of configuration parameters by GlobalSat Configuration App.

Configuration Parameters					
		Code word	Parameters	Type	Description
Main	Device	O0	Enable/Disable Power Off	1/0	0=disable 1=enable Default=1
		O4	Power on operating mode	u8	2=Periodic 4=Motion Default=2
		O7	Firmware version	char(28)	Read only
	Other setting	Gt	G-sensor sensitivity for motion detection	u8	5=high, 10=medium, 25=low Default=10
		O1	Interval for triggering motion sensor	u16, in seconds	1 ~ 100 Default=5
GPS	GPS	C0	GPS always on	1/0	0=disable 1=enable Default=0
		C1	The time to get GPS-fix if LT-20 got GPS-fix over 1 hour ago	u16, in seconds	60 ~ 600 Default=120
		C2	The time to get GPS-fix if LT-20 got GPS-fix within 1 hour	u16, in seconds	10 ~ 120 Default=40

Communication	Acknowledgement	A1	Wait confirmation from gateway after sending message to gateway	1/0	0=disable 1=enable Default=0
		A6	Number of re-sending reports without getting ACK from gateway	u8	1~8 Default=2
Tracking	Period	P0	Report interval of period report	u32, in seconds	>=60 Default=3600
	Motion	R0	Report interval in static state	u32, in seconds	>=60 Default=3600
		R1	Report interval in moving state	u32, in seconds	>=60 Default=60
		RH	GPS always on in moving state	1/0	0=disable 1=enable Default=1

LoRaWAN	LoRaWAN Parameters	D5	LoRaWAN ADR	1/0	0=disable 1=enable Default=0
			Enable Duty Cycle	1/0	0=disable 1=enable US Default=0 EU & AS923 Default=1
			Join Mode	1/0	0=ABP 1=OTAA Default=0
			DevEui	8 bytes Hex	It is the same as LoRa MAC sticker on device.
			AppKey	16 bytes Hex	[For OTAA mode] Default= 0123456789ABCDEFEFCDAB8967452301
			AppEui	8 bytes Hex	[For OTAA mode] Default=0000000000010203
			NwkSKey	16 bytes Hex	[For ABP mode] Default= 28AED22B7E1516A609CFABF715884F3C
			AppSKey	16 bytes Hex	[For ABP mode] Default= 1628AE2B7E15D2A6ABF7CF4F3C158809
			DevAddr	4 bytes Hex	[For ABP mode] It's the last 4 bytes of LoRa MAC sticker on device.
			RxDelay1	int, in μ s	800000~1200000
			Rx1_OpenTime	int	US: 150 ~ 800 EU & AS923: 250~800
			Rx2_OpenTime	int	US: 150 ~ 800 EU & AS923: 250~800

4. Communication

4.1 Acknowledgement

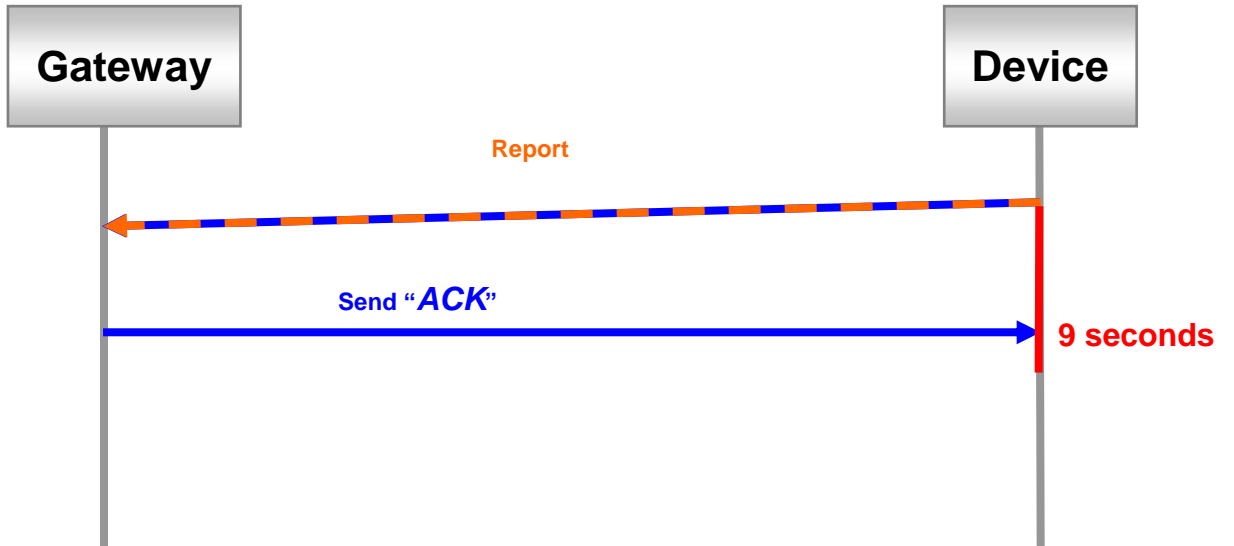
Acknowledgement is the acknowledge receipt used to confirm if gateway receive the report from device.

The following parameters must be set to enable/disable acknowledgement.

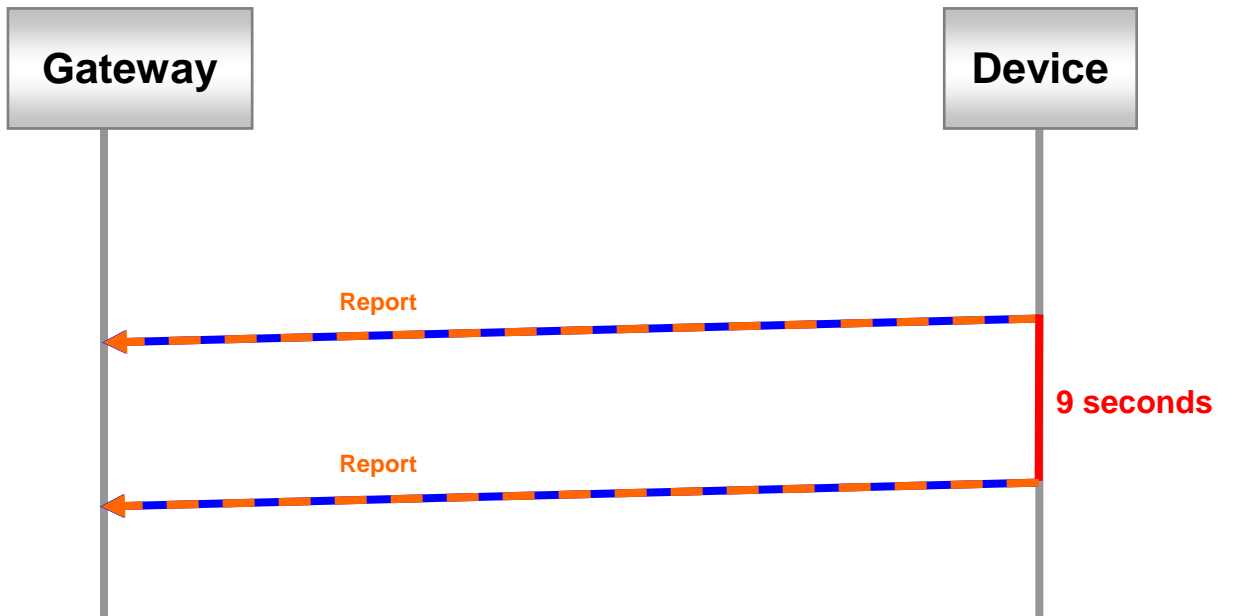
Code word	Parameters	Value	Description
A1	Wait confirmation from gateway after sending message to gateway	1/0	0=disable 1=enable Default=0
A6	Number of re-sending reports without getting ACK from gateway	u8	1~8 Default=2

4.1.1 Receive Acknowledgement from Gateway

Receive ACK from gateway within 9 seconds:



Not receive ACK from gateway within 9 seconds:



5. Tracking

5.1 Periodic Mode

Periodic mode is for setting an interval for LT-20 Series to regularly report its location according to the interval. You could set it to be periodic mode by setting parameter O4=2 via configuration App. When it reaches the report time, it will turn on GPS and report the location and concerning information to LoRaWAN™ gateway.

The parameter of periodic mode:

Code word	Parameter	Value	Description
P0	Report interval	u32, in seconds	>= 60 Default=3600

Example:

The periodic report is 800200000000000025900.

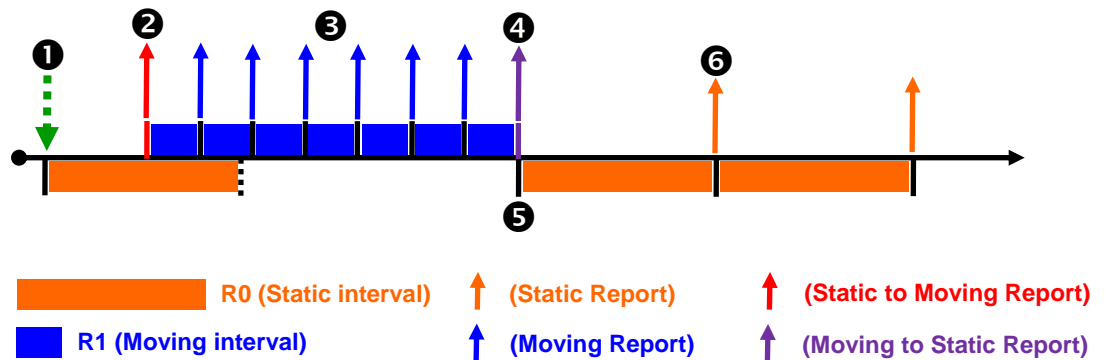
Note:

If P0 is less than 30 seconds, please enable C0 to make sure LT-20 Series could get GPS fix.

5.2 Motion Mode

Motion mode is an economic report mode. Under motion mode, LT-20 Series will report its location with high frequency when it detects motion (moving state). When it is static, it will report its location with low frequency (static state). It can save the report-transmission fee. Between the moving state and static state, there is a validation state for it not to jump to static state as soon as it does not detect motion.

There are 2 report frequency of motion mode, one is when it detects motion, and the other is when it is static. The behavior is as following:



①	Receive command and then enter motion static mode.
②	When LT-20 SERIES detects motion, it will enter motion moving mode and send “static to moving” report.
③	Motion Moving Report.
④	When LT-20 SERIES is static, it will send “moving to static” report and then return to the motion static mode.
⑤	Re-start timer for motion static interval.
⑥	Motion Static Report.

You could define the content of report and the report interval of motion mode. You could set LT-20 Series to be motion mode by setting parameter O4=4 via GlobalSat configuration App.

The parameters of motion mode:

Code word	Parameters	Value	Description
R0	Report interval in static state	u32, in seconds	>= 60 Default=3600
R1	Report interval in moving	u32, in	>= 60

	state	seconds	Default=60
RH	GPS always on in moving state	1/0	1=enable 0=disable Default=1

Example:

The static report is 800200000000000045c00.